

# Angel Herald

VOLUME XXVI • ISSUE 3

ATTIC ANGEL ASSOCIATION

JUL/AUG 2013

## The Angels Have Done it Again!



The line snaked all the way down towards the end of the parking lot before the sign ladies could finish attaching the flowers to the Attic Sale signs. The first fellow in line (who has had that honor for 7-8 years now) helped out by telling the next 20 or so people in line what number they were.



Thousands of hours of work culminated in two glorious days of Sale mania as the 2013 Attic Sale took place at High Point Church June 14 and 15. Angels worked their shifts and/or provided food for the working Angels and teens/husbands.



One lady told a story of how she bought ten items for a white elephant sale for her charity last year and they all sold! So she was back and bought 20 items this year!



Another woman commented that she was just moving out of the Salvation Army and getting her own apartment, and the Sale was such a godsend to her as she was able to get cookware, home essentials, linens and furniture at such reasonable prices. Then there was the gentleman who bought

all the golf balls and clubs left during the bag sale because he operates a "First Tee" program to teach young kids about golf. And the sisters who make the trip from up north every year, only now they have their children and grand-children



coming, too. They make an adventure out of the trip, coming down to Madison the night before. Not to be left out, their men come, too, and play golf while the ladies shop to their hearts' content.



Many thanks to this year's steering committee (top-bottom, l-r): Claudia Brown, Joanne Salzmans, Connie Grogan, Barbara Berven and Nancy Doll. A job well done indeed!

## Assn. Board Highlights

By Betty Brunner, Board Secretary

### June 17, 2013

Sara Parrell and Nancy Yoder of the Madison Metropolitan School District gave a synopsis of the findings of the MMSD Mental Health Task Force. Students with physical health problems are receiving care but those with mental health concerns are not and there is a strong relationship between wellness and success. Adolescents are 10-21 times more likely to come to a school based health center than one that is community based. These facts helped the Board to develop this year's annual focus which is: "**Support for school/community partnerships that provide mental health services for adolescents and teens.**"

A storage building for outside equipment and additional parking at the Association were discussed and will be studied.

The 2013 Attic Sale Steering Committee was thanked for doing a wonderful job and they will be meeting soon to come up with final recommendations and numbers. Loading and unloading went exceptionally well. It was felt the Sale was successful thanks to the hard work of all the volunteers.

### July 15, 2013

Jay Adkisson and Kim Speiss, representatives from Wipfli, gave a clear and detailed presentation on the findings of the financial audit of the Attic Angel Association and its affiliates. The audit went as scheduled and everything was clean. Compliments were given to Marcie Vaage and her staff for being prepared even though it was a busy time.

Bonuses for salaried employees, based on performance, were approved.

The results of the Attic Sale will be available shortly; not all information is in yet.

Discussion began about topics for the Fall Updates and will be continued at next month's meeting.

The Expansion campaign is nearing its goal as money continues to come in. It is hopeful that additional donations will help reach the final figure.



## Falk School Supply Drive: Jul. 25 – Aug. 15, 2013

By Pat Carroll, Planning & Outreach Chair

Attic Angel Community will collect school supplies for Falk Elementary School again this summer. Begin looking for collection containers near the office at AAP and in the Association building on July 25. We have until **August 15** to fill them! The supplies will be delivered to Falk on August 16 so they are available when registration begins on August 19.

Here is a partial list of needed elementary school supplies: backpacks, multi-colored two-pocket folders, solar-powered calculators, pencils, colored pencils, washable markers, crayons, kid-safe scissors, highlighters, glue sticks, pencil boxes, notebooks, hand sanitizer and facial tissues.

Our past gifts have meant that all children attending Falk have had backpacks filled with necessary supplies when school began. That's a big relief for parents of limited means and a confidence booster for their children! Let's try to do it again! Unfortunately, the need grows each year at Falk Elementary School so please be as generous as you can.

Too busy to shop? Feel free to send or bring monetary gifts to the Association office. We will be happy to shop for you! Thanks so much for helping the children at Falk Elementary School.

## Current Availability

By Claire Merkt, Director of Marketing

We have some great options for residency within the Attic Angel Community at this time!

We welcome and encourage your referrals - your recommendation of our Community is priceless!

**Households** – Due to recent expansion, several units offering a variety of floor plans are available for quick move-in!

**Apartments** – One and two bedroom apartments open at this time; just renovated with quartz countertops, stainless appliances, new flooring, lighting and hardware!

**Haven** – Two suites available for quick move-in!

**Prairie Point** – A few homes are available right now featuring two and three bedrooms in a range of prices.

## AAP Board Highlights

By Cindy Zellers, Board Secretary

**May 30, 2013**

The Board was introduced to Sara Jane Acker, who is doing an internship as part of her Administrator licensing work. The education portion of the meeting, led by Mary Ann Drescher, was devoted to a discussion of new service opportunities and how to evaluate them. This topic is part of the long range plan for AAP. The group acknowledged that it is always difficult to choose the opportunities that are right for us at any given time. Examples of opportunities on the horizon include active adult communities, wellness programs and a village model. These amenities will be largely want-driven. Emphasis will be on services that provide continuing care at home and extend the reach of a senior living community into the surrounding communities. Memory cafés and the SAIL program are examples provided in our area. Work is being done to help seniors make the choices that work best for them individually. Board members were assigned as liaisons for the Long Range Plan goals for the new Board year.

The Grand Opening plans were also presented. There will be a general open house on Sunday, September 8 from 2-4 p.m. and another event on Wednesday, September 11 for neighbors and the professional community.

An update was provided on the expansion project. The completion date is now projected to be July 26, 2013. Issues identified as progress continues are being solved, but the contingency fund balance is getting low.

The Resident Aid fund has reached \$4 million, on its way to a goal of \$6 million. When the Capital Campaign is completed, a minimum of 25% of the proceeds from the Signature Events will be donated to the Resident Aid Fund. An update was also provided on the resident WCCEAL (WI Coalition for Collaborative Excellence in Assisted Living) satisfaction survey results by Derek Buckley. Attic Angel uses this survey to identify areas of improvement.

## Falk Fun Fair Cake Walk A Success!

By Julie DeWitt, Planning & Outreach Committee

Many thanks to all the Angels who donated treats to the cake walk at the Falk School Fun Fair on Saturday, May 25! Your generosity sent many students and parents home with a treat and a big smile on their faces. Pat Carroll, Mary and Fred Ross, Jeanne Schultz, Carol Johnson and Judy Von Bergen also donated their time to run the cakewalk and help with other games, too.

## Meet a New AAPP Board Member

**Jean Mortenson**

I became an Angel with the 1975 class. My husband, Peter, and I have been married 50 years. We have two children and four grandchildren. The Attic Angel facility has been a big part of our lives. My in-laws, Luella & Bill Mortenson, lived at the Segoe Road location for two years, dying just six days apart. While I worked for Midwest Family Broadcasting for twenty years, I would always take time off to work the Attic Sale and the House & Garden Tour. I also received some of my hours helping with Theatre Bus in the evening. Being a part of this organization with an extraordinary group of caring, intelligent women has enriched my life, and interacting with residents gives my experience special meaning. I look forward to a new experience as part of the Attic Angel Prairie Point Board.



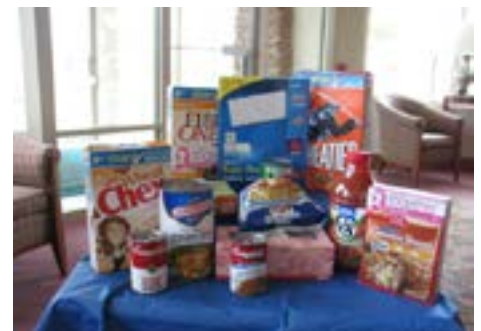
## Box Tops & Labels

By Pat Carroll, Planning & Outreach Chair

As part of our partnership with Falk Elementary, we are asking Angels, residents and staff to collect General Mills Box Tops for Education and Campbell's Soup UPC codes. There are a lot of products which carry these that one would never think of

– see picture.

Falk receives ten cents for each of these. Students at the school have created collection containers for the Association foyer, AAP front entrance



and the model/office at Attic Angel Prairie Point. Please keep looking for these throughout the year. Thank you!

## A Feather in Your Wing To:

**Mary Sue Burbach '77, Josie Pollock '95, Carmen Skilton '92, Avis Smart '91, Diane Stumpf '75 and Muffy Varda '90** for their discerning and patient help during the proofing of the new 2013/14 Membership Directory.



## New Haven Furnishings

By Angela Paoletti, Haven Activities Coordinator



*Pictured enjoying the new furnishings, are (l-r) Haven staff members Carla Alt, Sabrina Aderman and Angela Paoletti.*

New furniture in the Haven allows residents to relax in comfort and style in the morning before breakfast and in the evening after dinner. Throughout the day, residents are found using the new furniture for a variety of programs. The furniture can easily be rearranged

for both regular programming and spontaneous gatherings,

leading to increased socialization among residents.

The upholstered chairs and sofas are slightly higher than standard furniture to allow ease in sitting down and standing up. The new recliners are a first for the Haven – and residents love them! The furniture is a gift from the bequest of Florence Branch, former Attic Angel Place resident.



*Sabrina, Angela and Carla with the recliners.*

## July & August AAP Resident Birthdays

### Apts.

Jul 23 Mary Frey  
Jul 29 Dr. George Bryan  
Aug 4 Mr. Bernhard Works  
Aug 7 Mrs. Helen Reynolds  
Aug 10 Mr. Malcolm Crump  
Aug 18 Mr. Merritt Chance  
Aug 18 Mrs. Creola Zweifel  
Aug 19 Mrs. Ruth Keel  
Aug 26 Mrs. Elinor Pederson

### Haven

Aug 17 Mrs. Gladys Bray  
Aug 23 Mrs. Suzanne Blotner  
Aug 25 Mr. Herman Newcomb

### Health Center

Jul 31 Mr. Edward Zweifel  
Aug 24 Mrs. Polly Fosdick  
Aug 29 Mr. James Fosdick

### Households

Aug 2 Jean Kreil  
Aug 14 Mrs. Margaret Roth

## Studio News

By Emily Wellentin, Art Program Coordinator

### Changes to AM Studio

Beginning in July, the Studio will see some big changes in programming. AM Open Studio will offer four artistic themes per week and operate as a group activity instead of the current one-to-one format. There are no longer enough volunteers to support the AM Studio programming as it is set up now. With this new format, Angels will pick up residents, starting at 9:30 a.m., working from a gathering list. Once all are assembled, residents will work on individual projects within our theme day for the two hour block of time. The time and dates of AM Studio, 9:30 – 11:30 a.m. Monday through Thursday, will remain the same.

- Monday- Fiber Arts, including knitting, crocheting, stitching, sewing, quilting, weaving or any other activity related to the Fiber Arts.
- Tuesday- Beading
- Wednesday- Painting and Drawing
- Thursday- Card Making

Please continue to sign up for AM Studio. It is important to get as many Angels as possible for each Studio day so that more residents are supported.

Please also pass on any/all feedback you get, both positive and negative so that I can continue to tweak the program and improve it as time goes on.

THANK YOU for your amazing support of the studio! So many residents achieve a higher quality of life, learn new skills, meet new friends and plain old have fun here because there are Angels. What we have here in our Attic Angel Community is unparalleled and made possible because of Angels.

### Collaborative Art Project

To celebrate our new Health Center and Household expansion, residents, staff and volunteers were invited to come make fused glass drops in an art collaborative. The drops made in these sessions will be used during the expansion grand opening to create a permanent installation in the Health Center-Household garden walkway.

## HATS OFF!

**TO:** All the husbands and teens who were such a great help at the Attic Sale. Thank you so much!



# The China Connection

By Jean Rennebohm

The recent visit to the U.S. by the President of China, Xi Jinping, has been covered extensively by the national press and in a cover story in Time Magazine (June 17, 2013). Two of our residents were especially interested: Irv and Millie Shain, who moved to the Attic Angel Community in the summer of 2012. They have been long-time residents of Madison since 1952 when Irv started teaching chemistry at the UW-Madison. They spent two years (1975-76) in Seattle where Irv was provost and vice-president before moving back to Madison to serve as Chancellor from 1977 to 1986.

During his years as Chancellor, Irv Shain saw many changes on the campus. One change that meant a great deal was establishing an educational exchange program between the UW-Madison and the People's Republic of China. Having been to China in 1976 when he was an administrator at the University of Washington, he knew there was little interest in student exchange on the Chinese side. However, he maintained correspondence with former graduate student classmates in China after his move back to Madison, and still hoped to establish academic relations with their universities and research institutes. The opportunity to begin this relationship came two years later when the Chinese Academy of Science became interested.

In 1979, Chancellor Shain led two delegations to China, one in February, and one in November. Interviews with faculty members from several universities in China were conducted with a view to inviting those with sufficient command of English to spend two years working with UW faculty. There were many barriers to overcome before Chinese faculty members could come to Madison for advanced study. Most of these barriers were overcome by creating the position of "visiting scholar" where they would be expected to spend two years working with UW faculty.

The Madison visitors were warmly welcomed by the Chinese hosts who could not have been more welcoming. In addition to extensive time interviewing candidates who wanted to come to Madison, the visitors from Wisconsin were kept

busy with tours and visits of interest. Many things that had been closed to the outside world were now open to them. Millie Shain remembers having her own translator on the trip. The translator eventually came here to study and then stayed on. (She is now a citizen of the U.S. and lives in Madison.) Millie was grateful for the time in China.



Irving & Millie Shain pictured at the Ming Tombs.

She knew she would be entertaining a lot of Chinese scholars and officials at Olin House in the near future. The Wisconsin delegation members were able to renew old friendships with Chinese faculty members who had studied at Wisconsin in the 1950s, and to greet those who graduated in the 1940s. There were sincere toasts to the success of the mission at many banquets.

The exchange program was a great success. The early groundbreaking visits resulted in invitations to about 50 visiting scholars in the initial group. After their years of isolation, Chinese scholars were anxious to bring their universities up to modern standards. Each visiting scholar was accepted into the research group of a UW faculty member and became fully associated with faculty, staff, and graduate students. From 1979 to 1987, several hundred visiting scholars studied and did research on our campus. These are just some of the many memories that the Shains recalled as they read about Chinese President Xi Jinping's recent visit to the United States. Because of those early visits to the People's Republic of China, the number of visiting Chinese scholars has grown from fifty to 1,500 students from China currently enrolled, by far the largest group of foreign students on campus.

The efforts of the UW-Madison faculty and staff working with the visiting Chinese scholars have made a significant difference in modernizing the universities in China. The Shains wonder if President Xi Jinping recognizes the contributions made by the UW-Madison.

## Membership

By Elaine Yankunas, Membership Chair

Remember Angels: Summer is such a great time to get together with good friends. It provides us with the perfect opportunities to mention the wonderful work we do as Attic Angels. So we need to spread the joy we gain as Angel volunteers. Let's try to get those tennis and golf partners, friends and neighbors, and the cool someone you just met at the pool to join our organization.

Sponsorship forms are available in the Association office and on our website: [www.atticangel.org](http://www.atticangel.org) under the Sign-ups/Forms in the Member Entrance. Please contact me with any questions at 850-4884. Thank you!

## Attic Angel Alzheimer's Walk Team Needs You

By Jonelle Secard, Co-Captain

The annual Alzheimer's Walk will be held on Saturday, September 28, 2013. Our team has already started fundraising, after a donation of Mallards tickets and a Shoe Box gift certificate. A raffle was held and the winners were drawn on Thursday, June 20. The three winners of a pair of Mallards tickets are: June Spencer, Sheila Schultz and Rock Sarbacher. The winner of the Shoe Box gift certificate is Sheila Luhman. Congratulations to these lucky winners! And a big Thank You to all who participated in the raffle.

We will be holding another Raffle/Silent Auction later in the summer so don't miss out on some fabulous items which could be yours! We will also hold a team meeting soon, but are waiting to get the scoop from the Alzheimer's Alliance on particulars of this year's event. Stay tuned for more details in coming issues!

Please consider joining us this year for the Walk. There will also be a Run for those of you who are so inclined.

We have realized as we learned the date that there is a need for another Co-Captain who can take charge on the day of the Walk to make sure we get the team together for a picture and turn in any last minute donations. All three of us have prior commitments! Please contact us if you would be willing to do this or if you would like to donate to our Raffle/Silent Auction or the team. The other team captains are Sheila Luhman and Angela Paoletti. Thanks so much!

## Reminder Angel Calls

By Kathy Schultz, Volunteer Coordinator



What a treat it is to receive a call from our friendly Reminder Angels. Believe it or not, as "life happens" for you, sometimes "life happens" for these ladies, as well, and your call may be missed. If you don't receive a call and you are pretty sure you are on the schedule - please don't think that something has changed. Check your calendar; check the schedule on line; call Kathy or Jonelle to verify - but PLEASE COME IN. These are courtesy, Angel touch, reminder calls. Please have a self-reminder in place just in case. We (staff, residents and your Angel team) are counting on you to be here.

## Humor from Bratfest at Prairie Point

Author Unknown, provided by Truman Graf

We celebrate March 17th in commemoration of St. Patrick's great and noble deed in driving the Norwegians out of Ireland. It seems that centuries ago many Norwegians came to Ireland to escape the bitterness of the Norwegian winter. Ireland was having a famine at the time and food was scarce.

The Norwegians were eating almost all the fish caught in the area, leaving the Irish with nothing but potatoes.

St. Patrick, taking matters into his own hands like

most Irishmen do, decided that the Norwegians had to go. Secretly he organized the IRATION (Irish Republican Army to rid Ireland of Norwegians). Irish members of "iration" sabotaged all power plants in hopes the fish in Norwegian refrigerators would spoil, forcing the Norwegians to colder climates where their fish would keep.

The fish spoiled all right, but the Norwegians, as everyone knows today, thrive on spoiled fish.

Faced with failure, the Irishmen sneaked into the Norwegian fish storage caves in the dead of night and sprinkled the rotten fish with lye, hoping to poison the Norwegian

intruders, but as everyone knows this is how lutefisk was introduced to the Norwegians and they thrived on the lye-soaked fish.

Matters became worse for the Irishmen when the Norwegians started taking over the Irish potato crop, and making lefse. Poor St. Pat was at his wits' end and finally on March 17th he blew his top and told all the Norwegians where to go, and it worked! All the Norwegians left Ireland and went to Stoughton.



## Classic Clothing Sale

Thank you to all who have already donated to our annual Classic Clothing Sale. If you would like to contribute, please gather your gently used clothing and accessories and bring them over to the Association office. There are racks in the basement to the left when you get off the elevator. The Sale will occur on October 8 & 9.



# Attic Angel Place Expansion News Flash # 17

## *The Light at the End of the Tunnel*

By Judy Brannstrom, Development Officer

I see it coming...the long-awaited day when we celebrate the conclusion of the "Enhancing the Circle of Care" capital campaign for the Attic Angel Place Expansion Project. The Capital Campaign Committee and the Attic Angel Place Construction Team are in a dead heat – both expecting to cross the finish line at the same moment during the Grand Opening celebration on September 8!

Many dreams and plans have come alive in the new addition at Attic Angel Place. We are deep into the final phases of "operationalizing" the new spaces - placing furniture and equipment, programming, staff and volunteers in all the right places, informing the community of our new units, and welcoming new residents.



*3rd floor HH Library*

Remodeling of existing spaces is winding down and should be complete in mid-August.

The Capital Campaign for the Expansion Project has reached the \$1.4 million mile marker! With just \$100,000 to go, campaign committee members are gratified by the overwhelming, supportive response of donors in the Attic



*Computers in 3rd floor HH Library*

Angel Family. Thank you to all who have helped us to get this far! Your gifts are already at work!

We eagerly await the results of the 2013 Attic Sale since net proceeds will go to the capital campaign and help us to get even closer to the \$1.5 million goal! Thank you to each and every Angel

who worked at the 2013 Attic Sale! The Expansion Project has saved money on furnishings by purchasing reasonably priced, gently used Attic Sale items (desks, credenzas, artwork, etc.) for use in the new addition.

To those we haven't heard from yet, please know that we would value a sign of your Attic Angel support and pride through your gift of ANY size to the Expansion Project. I'll entertain your questions at 662-8901. Please be a part of this amazing Attic Angel accomplishment. Your gift will make a difference – and just might be the one to get us to that light at the end of the tunnel!

### SAVE the DATE

#### A Grand Opening Celebration

**When:** Sunday, September 8, 2013, 2-4 p.m.

**Where:** Attic Angel Place

Take the grand tour of new and remodeled spaces and enjoy refreshments along the way!

## Silent Auction

By Pam McDonald, Silent Auction Chair

The Silent Auction Committee will soon begin work on this year's event which will be held at the Association's Fall Luncheon at Blackhawk Country Club on Tuesday, October 1. Due to the generosity of many Angels, friends and the business community, last year's Silent Auction yielded over \$7,900 for the Association.



Past donors will receive a letter in early August asking them to consider donating again. If you know of a business that might be willing to donate or if you would like to contribute to the Silent auction as a new donor, please contact Pam McDonald at 233-7188 or [rapamcd.mac@mac.com](mailto:rapamcd.mac@mac.com). Thank you!

**Membership Directories** have been mailed out. You should receive yours by the end of July. Please check your listing and any committee or activity listing in which you are involved and inform Jonelle or Terry of any errors. All corrections will be made in the online Directory Updates. I apologize for any errors and thank you for your patience.

Please change the following in your new books:

On page 10, Flower Arranging is the **2nd and 4th** Wed., from 9:30 - 10:30 a.m.

On page 30, please change Margo Hirsch's address to 6767 Frank Lloyd Wright Ave Unit 315, Middleton WI 53562.

# Contributions ~ May & June 2013

## MAY

### AAP

#### *In-Kind*

Frances Culbertson

### AAP Expansion Project

Anonymous x 4

Sam & Joan Arneson

Don & Jane Bailey

Ray & Sandra Balfour

Nancy Brandenburg

Fred & Lois Buelow

Tom & Sue Bush

Joan Collins

David & Jane DeCock

Veronica Dickmann

Wallace & Peggy Douma

Mary Ann Drescher

Betty Elsas

Robert & Linda Graebner

Cathy Greer

Allen & Dolores Haas

Nancy Heiden

Gary Hein

Sue & Steve Hird

Paul & Lynne Jacobsen

Joni Jaeger

Kenneth & Marilyn Johnson

Bob & Pam McDonald

Thomas Murray

Edward & Lorain Olsen

Arline Paunack

Barb Peterman

Bob & Rita Reif

Mary T. Ross

Collin & Margaret Schroeder

Sarellen Schuh

Roland & Nancy Smith

Sherri Stafford

Harriett Steil

Harold & Mary Stitgen

Harriet Stoll

Barbara Sullivan

Bill & Barb Tensfeldt

Bob & Lu Westervelt

Terri Wiedenbeck

Barbra Winter

Al & Dale Wortley

Bob & Cynthia Zellers

### **In honor of the Angel Class of '90, the Flakes**

Glenda Lindsay

### **In honor of Association Board & Staff**

Bill & Peg Jones

### **In honor of AAP Board & Staff**

Bill & Peg Jones

### **In honor of Bernard Faden on his 90th birthday**

Evan & Jane Pizer

### AAP Expansion Project (cont.)

#### **In honor of their 50th wedding anniversary**

Mary Jo & Arthur Prieve

#### **In memory of Frances Crumpton '58**

Gladys Blanchar

#### **In memory of his wife, Marilyn Faden**

Bernard Faden

#### **In memory of E.M. "Mike" Foster**

Bill & Peg Jones

#### **In memory of Jan Gay '01**

Bill & Peg Jones

#### **In memory of her husband, Dale Jennerjohn**

Joan Jennerjohn

#### **In memory of his wife, Lee Kapitan**

Stephen Kapitan

#### **In memory of Esther Kemmerer**

Bill & Peg Jones

#### **In memory of Patty Kramer '06**

Bill & Peg Jones

Barb Tensfeldt

#### **In memory of Carl R. Loper, husband of Jane Loper '78**

Bill & Fern Lawrence

#### **In memory of Carol Maroney '93**

Art & Pat McClure

#### **In memory of Mike Merkt, brother of Claire Merkt**

Bill & Peg Jones

#### **In memory of Marv Peterson**

Bill & Peg Jones

#### **In memory of Thomas "Tom" Raemisch, husband of Rosanne Raemisch '91**

Angel Class of '99:

Elaine Boehlke

Jan Cibula

Nancy Frank

Joan Kirkhuff

Carol Larrabee

Marilyn Nelson

Judy Ries

DeeDee Ridders

Sarellen Schuh

Jeanne Silverberg

Nancy Walker

Marlene Jaskaniec

Bill & Peg Jones

#### **In memory of Roth Schleck, companion of Marion Applegate '72**

Gladys Blanchar

Janet Bleckwenn

Lottie Frank

Jane Hilsenhoff

Bill & Peg Jones

Art & Pat McClure

#### **In memory of Roth Schleck (cont.)**

Jean Rennebohm

Carolyn White

### AAP Expansion Project (cont.)

#### **In memory of Brian Smart, son of Avis Smart '91**

Anonymous

#### **In memory of his wife, Carla Smith '69**

Web Smith

#### **In memory of her dog, Tutoe Smith**

Pat Smith

#### **In memory of her husband, Leonard Thomas**

Betty Thomas

#### **In memory of Emanuel J. Tucker, husband of Pearl Tucker**

Bill & Peg Jones

#### **In memory of Susan Vaughan**

Bill & Peg Jones

#### **In memory of Sally Whiffen**

Jane Hilsenhoff

#### **In memory of Ronald White**

Carolyn White

#### **In memory of Georgia Woods, mother of Kate Richardson '03**

Bob & Kate Richardson

#### **In memory of Joe Young**

Bill & Peg Jones

### Association

Daws Strother

#### **In memory of Carol Maroney '93**

Judy Taylor

#### **In memory of Roth Schleck**

Mary Field

Justin Hall

Kristin Hall

Reed & Ellen Hall

Bob & Jean Hastings

Bob & Phyllis Koch

Thomas & Tamela Michels

Katie Montalbano

Marshall Nelson

Beth Ritchie

Arlene Rotter

John & Mary Storer

Judy Taylor

Gladys Wackman

#### **In memory of Geraldine Yelk**

Joanne Krause

Rita Schunk

#### *Attic Sale*

Tanya Snow

#### *Building & Grounds*

#### **In memory of Geraldine Yelk to make your wonderful gardens even better**

Capitol Indemnity Corporation

#### *In Kind*

Connie Grogan

(Continued on next page)



## Contributions ~ May & June (cont.)

### Resident Aid

Celeste Wencil

#### **In memory of Genevieve Busse**

Mary Lou Hogan

#### **In memory of Frances Crumpton '58**

Joan Jennerjohn

Boopie & George McInnis

#### **In memory of Carol Maroney '93**

Jane McGinn

#### **In memory of Thomas Raemisch**

Dottie Dittmann

Betty Griffith

Dennis & Kay Steffen

#### **In memory of Roth Schleck**

Roz & Lou Boutwell

Muriel Curry

Brian Dorn

Betty Griffith

Jane McGinn

Dennis & Kay Steffen

Bob & Lu Westervelt

#### **In memory of Emanuel J. Tucker**

Robert Cramer

Timothy & Patti Fannon

Cathy Hill

Patricia Ostrander

#### **In memory of Barbara Webster**

Mark & Nancy Moore

## JUNE

### AAP Expansion Project

Alliant Energy Foundation, matching gift from Edward & Nancy Killeen

Sharon Baker

Anne Bolz

Chris & Diane Hornung

Marie Jerred

Edward & Nancy Killeen

Jane McGinn

Bjorn & Gail Thompson

Ellen Wendt

#### **In honor of Attic Angel staff**

Pat Bernhardt

#### **In honor of the AAP Capital Campaign**

##### **Steering Committee**

Bill & Barb Tensfeldt

#### **In memory of Walter E. Ashley**

Jo Ann Ashley

#### **In memory of Joanne Bush '68**

JoAnn Six

#### **In memory of Paul Emmerich**

Jan Emmerich

#### **In memory of Jeanne Kiley '66**

Maurice Kiley

#### **In memory of her mother, Isabel Krapfel**

Joan Collins

#### **In memory of Roth S. Schleck**

Marion Applegate

### AAP Expansion Project (cont.)

#### **In memory of Gertrude Schmitz**

Richard & Therese Schoofs

### Association

Gretchen Rieser

Joan Kuypers

#### **With gratitude for use of meeting space at**

##### **Attic Angel**

Mad City Quilters

#### **With thanks for the comforts provided through prayer shawl gifts to residents**

Monica Dinauer

#### **In memory of Dorothy Boll, mother of James Boll, Jr.**

Mary Alice Shahidi

#### **In memory of Joanne Bush '68**

Bob & Harriett Steil

#### **In memory of Genevieve Busse**

Sarah Rose

#### **In memory of George Friend, father of Linda Wise '04**

Donna & Arnie Chandler

#### **In memory of Roth S. Schleck**

Dale & Gigi Thompson

US Bank Private Client Reserve

#### **In memory of Richard Schmalz, father of Mary Beth Schmalz '90**

Glenda Lindsay

Mary Stitgen

#### **In memory of Donald R. Stroud**

Scott & Sandra Gorman

Bob & Harriett Steil

Stroud, Willink & Howard LLC

#### **In memory of Geraldine Yelk**

Paula Romeo & Victor Emanuel

### Prairie Point

Alliant Energy, matching gift from Edward & Nancy Killeen

Truman & Sylvia Graf

### Resident Aid

Chris & Diane Hornung

#### **In celebration of the birthday of**

##### **Judy Braucht '91**

David & Becky Braucht

#### **In memory of Roth S. Schleck**

Sam & Joan Arneson

Lucy Hall

Joseph & Elizabeth LaBella

#### **In memory of Richard Schmalz**

Lynn Hodges

Jane O'Sheridan

# Thank You to our 2013 Attic Sale Sponsors!

## **Diamond - \$5000+**

Company Store

Magic 98

## **Gold - \$2500 - \$4999**

Harker Heating & Cooling

Joan Collins Publicity

Orange Tree Imports

Orchids Garden Centre & Nursery

Wisconsin State Journal

## **Silver - \$1000 - \$2499**

BMO Private Bank

Community Living Solutions

Reinhart, Boerner, Van Deuren, SC

## **Bronze - \$500-\$999**

Axley Brynelson Law

Coyle Carpet One

Econoprint

Gordon Flesch Company, Inc

H&H Plumbing Services, Inc

Isthmus Publishing Co

Melli Law

Real Estate Dynamics, Inc

TCF Bank

Wipfli LLP

## **Friend - \$100-\$499**

A-Z Team/First Weber Realty

Brownhouse Design, LLC

Bucky's Portable Restrooms

Capitol Bank

Robert W. Baird & Co - Corbett-

Gehler Group

Econoprint

Filterfresh Coffee

Krupp General Contractors, LLC

Livesey Painting, Inc

Snyder & Associates

South Central Contracting, Inc

Summit Credit Union

Webcrafters, LLC

Ziegler Capital Markets



640 Junction Road  
Madison, WI 53717

NON-PROFIT  
ORGANIZATION  
U.S. POSTAGE  
**PAID**  
MADISON, WI  
PERMIT NO.  
1328

**Address Service Requested**

## **Yearly Event Calendar**

|                 |                              |
|-----------------|------------------------------|
| Sept. 8         | Grand Opening - Expansion    |
| Sept. 19        | Legacy Event                 |
| Oct. 1          | Fall Luncheon/Silent Auction |
| Oct. 9-10       | Classic Clothing Sale        |
| Oct. 16, 17, 24 | Fall Association Updates     |
| Nov. 13         | Holiday Leadership Luncheon  |
| Nov. 14-15      | Holidays Galore & More Sale  |
| Dec. 10         | HC/HH Holiday Social         |
| June 13-14      | 2014 Attic Sale              |
| Oct 11, 2014    | 125th Anniversary Gala       |

Many thanks to all Angels for their tireless work and many months of preparation to make the 2013 Attic Sale such a wonderful event! The Steering Committee appreciates all of your efforts (big and small) to insure the success of our largest Signature Event!

## **July/Aug Events Calendar**

|                   |   |
|-------------------|---|
| <b>Jul<br/>24</b> | Joni Jaeger Service Award<br>Downtown Rotary<br>12 Noon   |
| <b>25</b>         | Apt. Birthday Party<br>4:15 p.m.<br>AAP Community Room  |
| <b>Aug<br/>1</b>  | Education Seminar<br>"Alzheimer's and Dementia;<br>What is It? What Can I do?"<br>10 a.m.<br>AAP Community Room |
| <b>20</b>         | Lemonade Party - Class of '12<br>3 - 4 p.m.<br>Community Room   |
| <b>21</b>         | Past President/Chair Brunch<br>9 a.m. Tour/9:30 Brunch<br>Association Large Boardroom                           |

# Angel Herald

Angel Editor: Mary Booth  
Staff Editor: Jonelle Secard  
Photographers: Mary Booth  
Judy Brannstrom  
Lynne Jeffris  
Jonelle Secard  
Mary Jo Tierney

The *Angel Herald* is published for members of Attic Angel Association.  
(608) 662-8900  
FAX: 662-8989

Email: [angelofc@atticangel.org](mailto:angelofc@atticangel.org)  
Website: [www.atticangel.org](http://www.atticangel.org)

*Angel Herald* articles are due by the 15th of each month for the following month. Editors reserve the right to edit for content and space.

## **In Memoriam**

Mrs. Rachel Jacobs, wife of Sam Jacobs, AAP  
Joanne Bush '68  
Lorna Holmes '71  
Richard Schmalz, father of Mary Beth Schmalz '90  
Mrs. Ruth Trameri, AAP  
Mr. Don Stroud, AAP  
Mrs. Rose Hickey, AAP

George Friend, father of Linda Wise '04  
Betty McDonald, mother-in-law of Pam McDonald '02  
Dick Thompson AAP, husband of Anne Thompson '04  
Arthur N. Berven, father-in-law of Barbara Berven '10  
Pete Lohr, father of Linda Garnett '98  
Virgie Peloquin '70  
Todd Lindauer, husband of Sheila Lindauer